

MATERIALS

- Roof:** 8mm translucent polycarbonate PCSS panels
- Anodized aluminum frame
- Structure:** heavy gauge steel framing
- Hardware:** 5/8" x 4" embed stainless steel wedge anchor bolt (4 per column)
- 1/2" thick stainless steel anchor plate, grade 309 alloy

FINISH

Powder Coat

Our powder coat finish is highly durable and is applied through the following steps:

1. Mediablast
2. Electrostatically applied epoxy primer
3. TGIC polyester powder coat is applied as the final coat

Kynar Resin

Is a special grade of PVDF resin used as the base resin in long-life coatings for aluminum, galvanized steel, aluminized steel, as well as metal trim and components

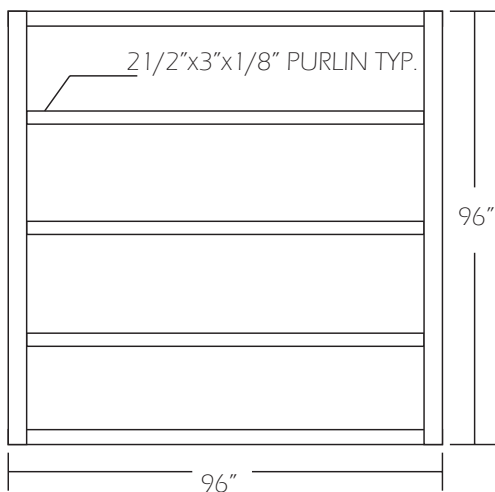
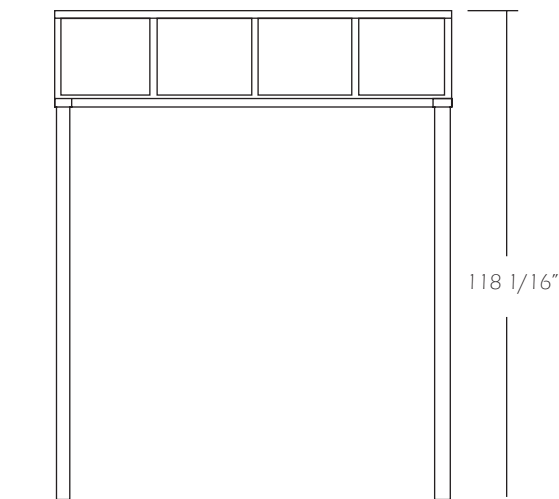
MOUNTING

Surface mount

An above ground mount that is anchored to the base material for a semi-permanent bike rack

Below ground

An in ground mount that is embedded into a concrete base for a permanent shelter



STANDARD SIZES

- | | | |
|------------------------------------|-------------------------------------|-------------------------------------|
| 6' x 8' \leq 4 bikes | 8' x 18' \leq 10 bikes | 9' x 18' \leq 10 bikes |
| 8' x 8' \leq 6 bikes | 8' x 24' \leq 12 bikes | 9' x 24' \leq 12 bikes |
| 8' x 12' \leq 8 bikes | 9' x 12' \leq 8 bikes | 9' x 30' \leq 14 bikes |

**Custom sizes are available. Number of bikes based on the footprint of the 2 bike Varsity Bike Dock*

***Please contact Parkabike if you would like details or specs of our other Apex outdoor shelters.*